



Ultra Wide-band Coverage SDR Receiver

- Full coverage reception form 100KHz to 2GHz SDR
- Independent antenna inputs for Shortwave and VHF
- USB computer connection (mini usb)
- Very High dynamic range receiver
- Low noise pin-diode band switch
- Accurate and efficient band filters
- Very clean audio reception
- SMA golden antenna connectors
- LED power and band indication
- 40MHz local oscillator for HF conversion
- DBM balance diode ring mixer
- Small size board
- Freeware software
- Up to 3.2 M Sample rate.



Toggle switch will select the SMA antenna input.
The LED light color will indicate.

GREEN= VHF and UP
ORANGE= Short Wave

Cables antennas and PC

Software installation:

Download from here: www.sdrsharp.com

Extract the Zip files into a folder and run httpget

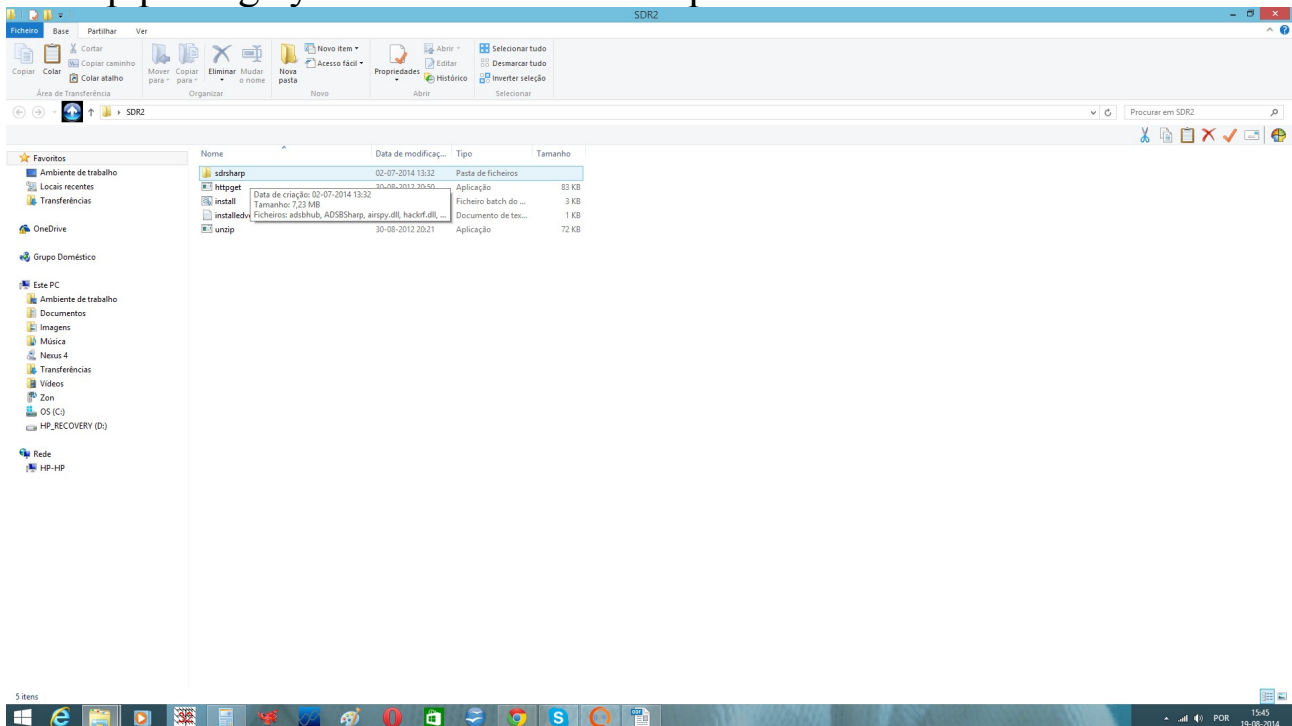
You will see a “black box” opening and several programs will install automatic.

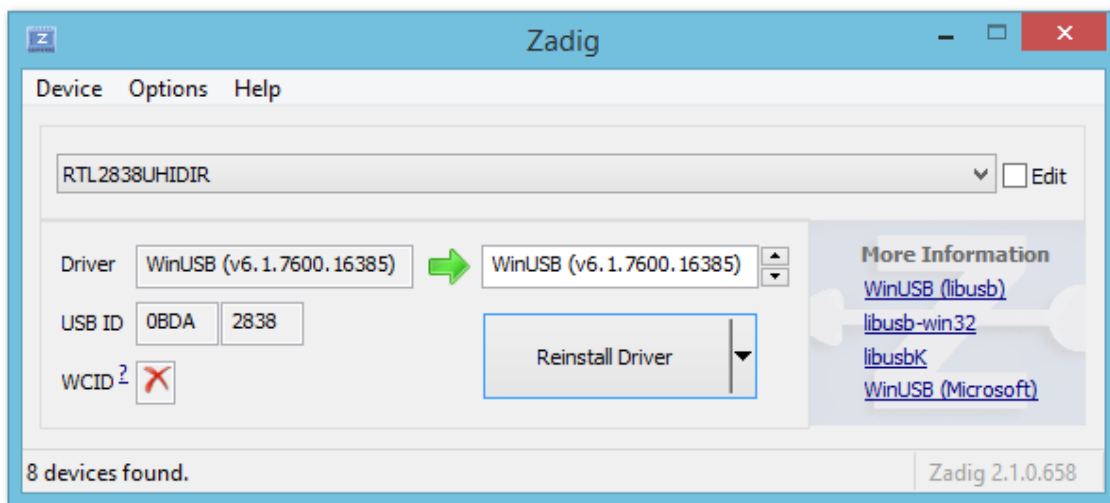
Plug you SDR on a USB connector,

You will ear a sound on PC speaker indicating that windows have found the device.

Windows will try to install is drivers. You don't need do anything

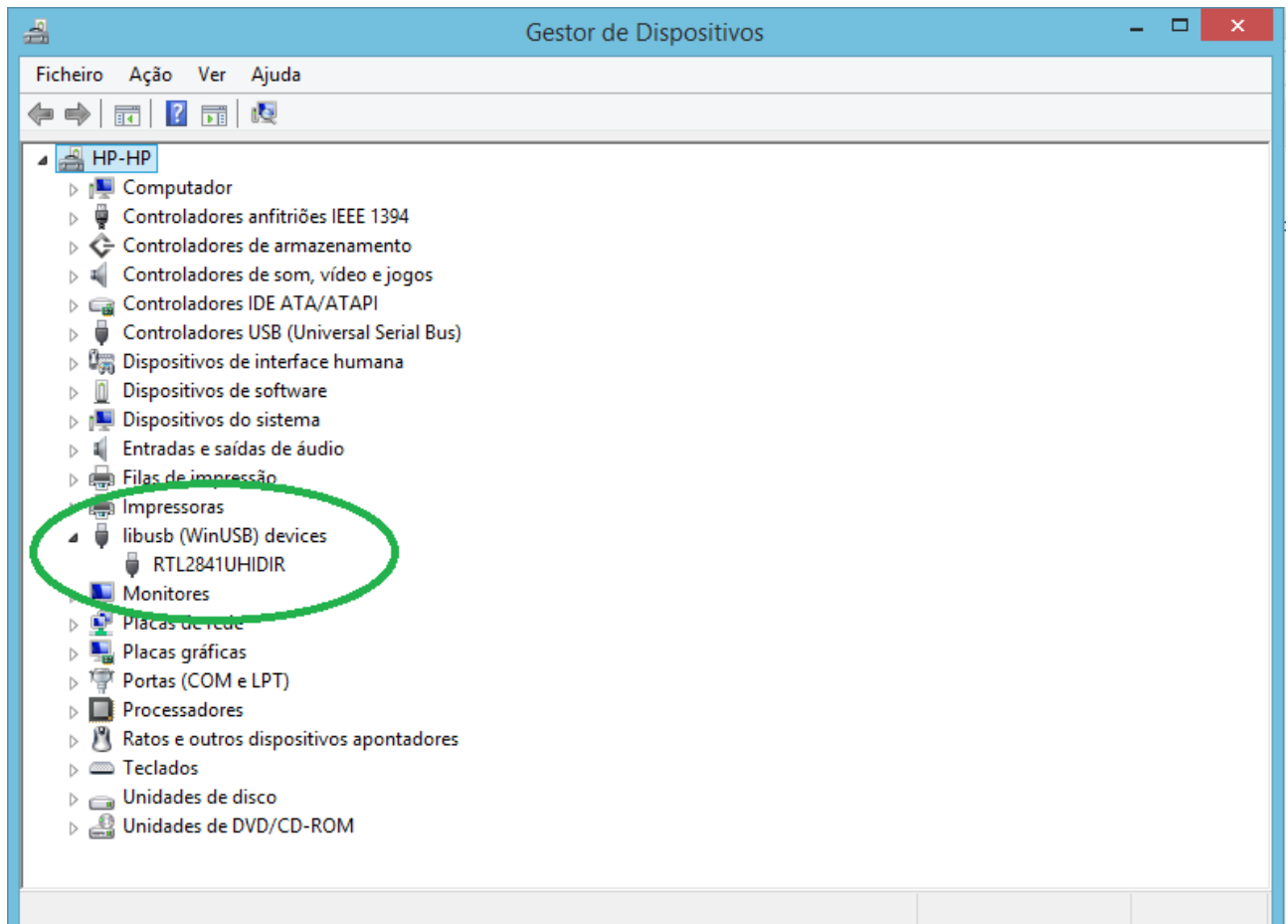
On Zip package you now downloaded open the ZADIG file and RUN it.





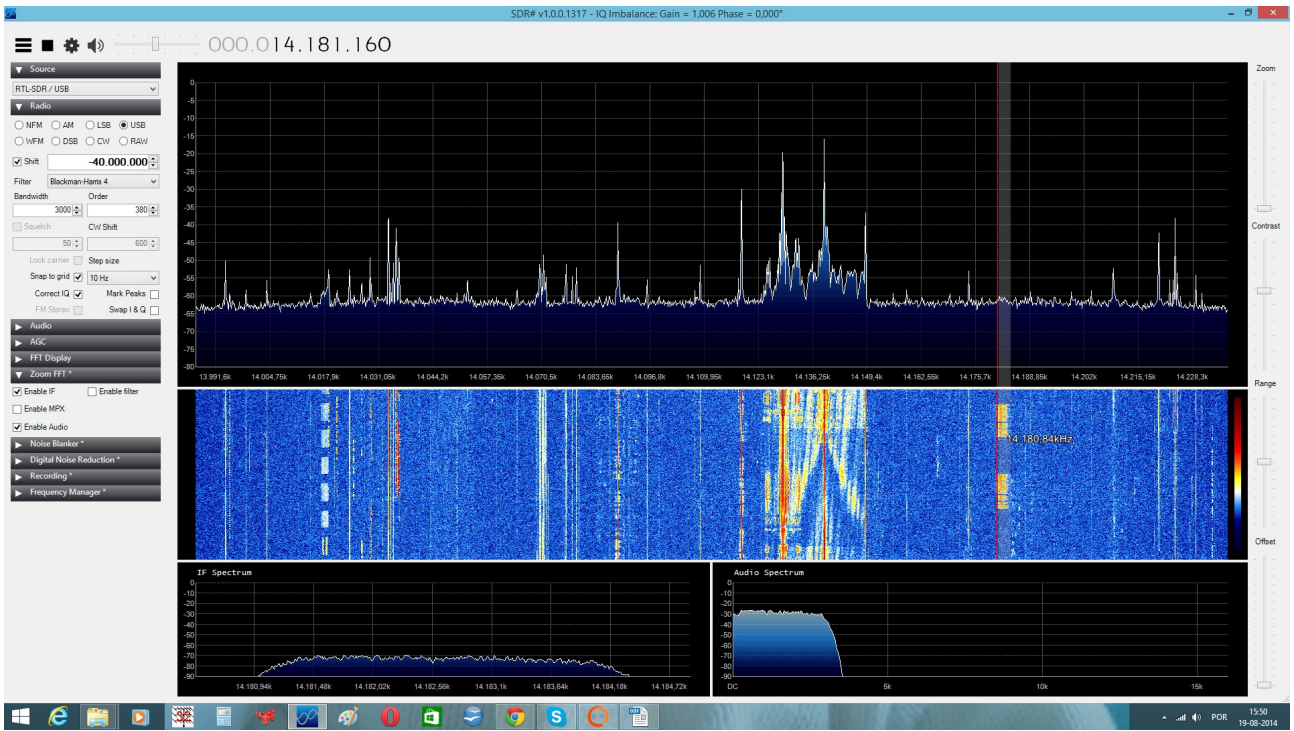
On options select LIST all devices and choose RTL2832UHIDIR
Install Drivers wait a few seconds.

When all drivers are OK, you can check on you Device Manager
Must be as picture.

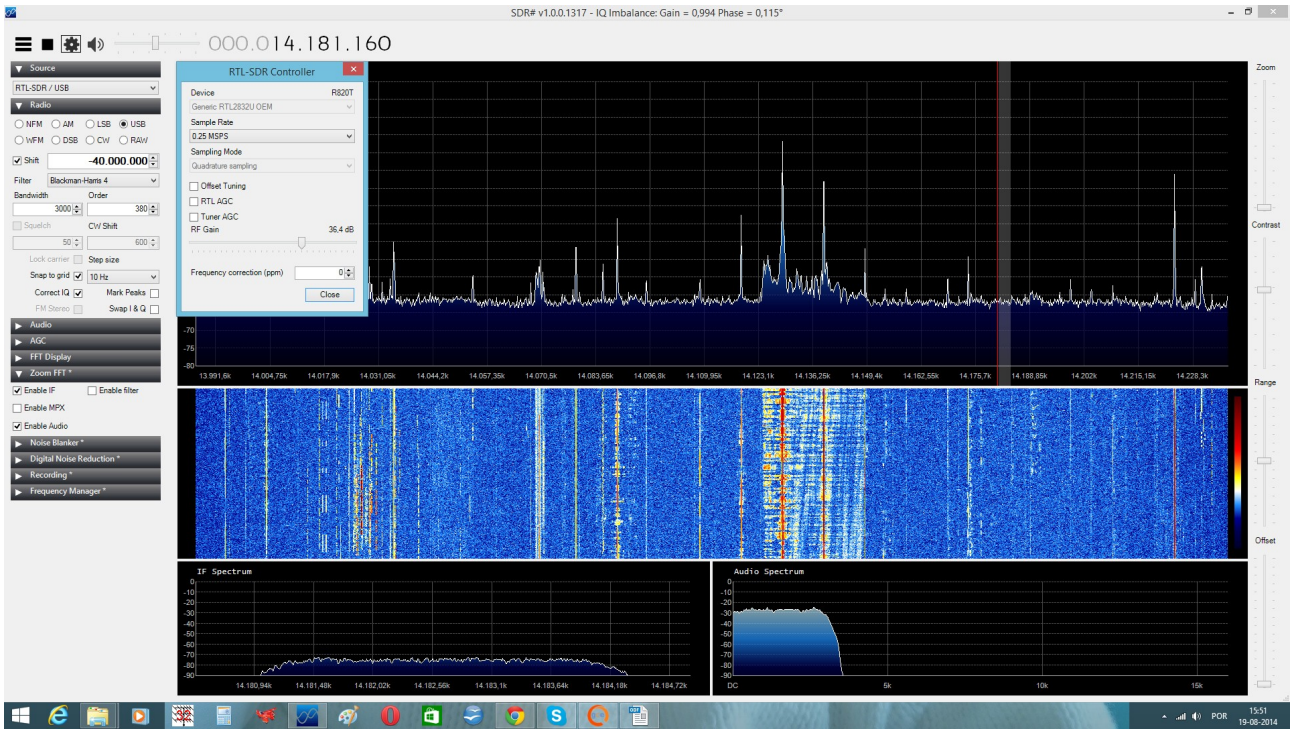


After drivers installed

open you SDR SHARP program



Select the Sample Rate and insert the Shift frequency as picture.



Run your SDR.

Operation on HF.

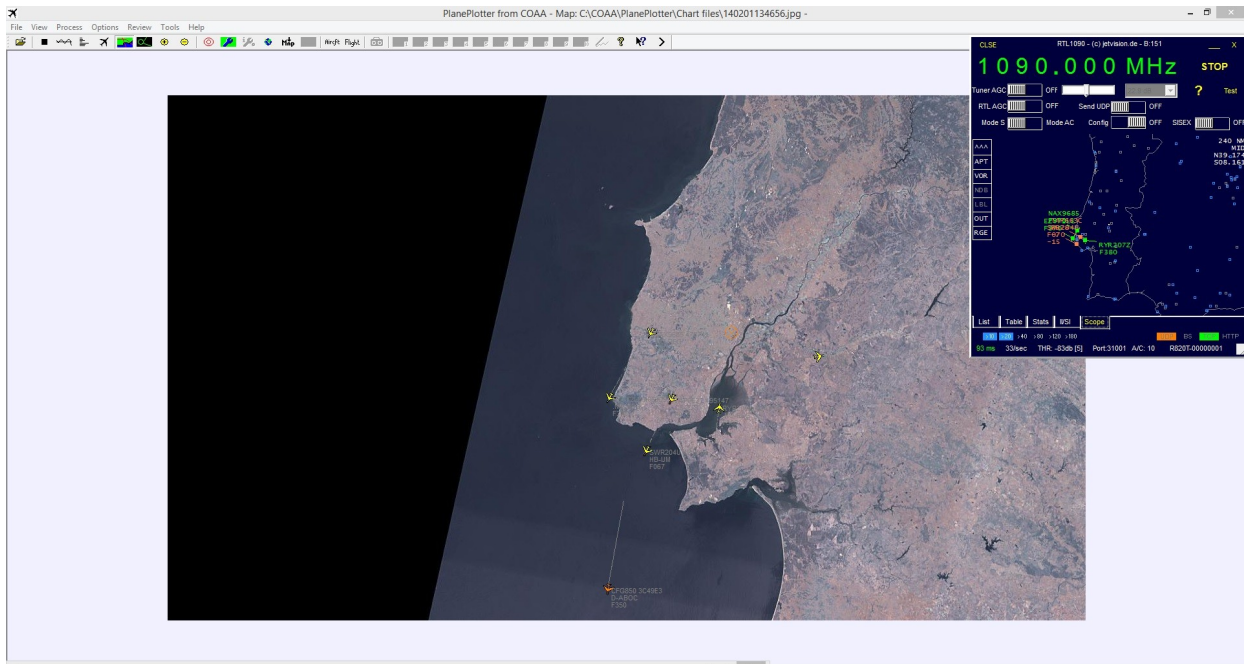
- Click in ON Shift box
- Switch on SDR toggle switch, Orange LED will light
- Tune your SDR Sharp on the bands.
- Reception on this mode from 100KHz to 30MHz
- Input antenna is HF

Operation on VHF and UP:

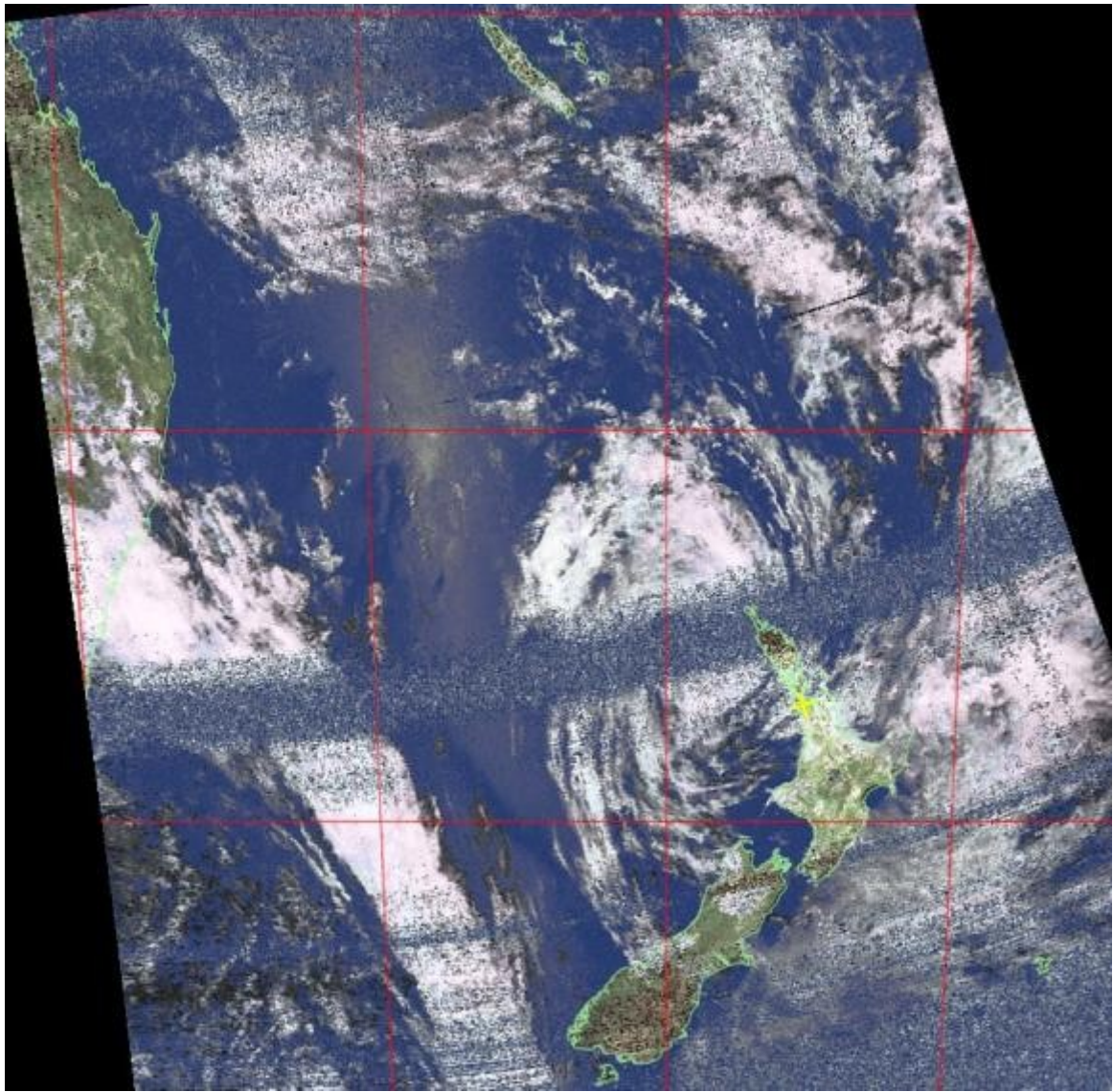
- Click OFF the Shift box
- Switch off the SDR toggle switch. Green LED off
- Tune SDR on the band you wish to receive
- Reception from 30MHz to 2GHz
- Input antenna is VHF

Plain Viewer RTL1090

GET software here: <http://rtl1090.web99.de/>



NOAA Weather satellites RX : <http://www.rtl-sdr.com/rtl-sdr-tutorial-receiving-noaa-weather-satellite-images/>



There are also many other freeware software's available on internet that you can try.

Gnu radio Linux software:
<http://rtlsdr.org/softwarelinux>



Android: https://play.google.com/store/apps/details?id=marto.rtl_tcp_andro&hl=pt_PT



other windows programs:

<http://www.hdsdr.de/>

<http://sdr-radio.com/>

etc.

Enjoy the new World of the radio on a SDR device.

Best 73

Tony

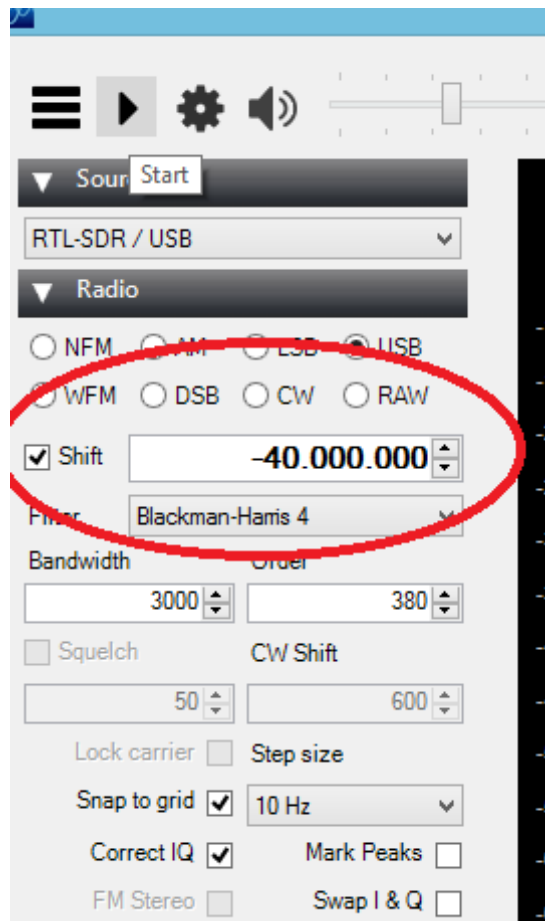
CT1FFU

www.dxpatrol.com ct1ffu@gmail.com +351965626669

Troubleshooting:

1- VHF works fine but no HF

- >make sure you enter the correct SHIFT frequency (minus) -40 000 000
- > make sure the switch is toggle to HF and LED is RED.
- > antenna input is HF



2 – Computer detects unknown device

- > reinstall the Zadig drivers with SDR plugged in.
- > try another USB cable (some cables just won't work)

3- Installed drivers but SDRsharp can't find any SDR.

> Sometimes, especially on Win7 the system install other windows drivers.

You need go on device manager and manually choose the drivers.
Follow picture.

