



Ultra Wide-band Coverage SDR Receiver MK3

- Full coverage reception from 100KHz to 2GHz SDR
- Independent antenna inputs for Shortwave and VHF
- USB computer connection (micro-usb)
- Very High dynamic range receiver
- Low noise pin-diode band switch
- Accurate and efficient band filters
- Very clean audio reception
- SMA golden antenna connectors
- LED power and band indication
- 40MHz local oscillator for HF conversion
- DBM balance diode ring mixer

- Small size board
- Freeware software
- Up to 3.2 M Sample rate.



Technical data DX-Patrol

@ 14MHz, CW, 500Hz, SDR#	
Noise Floor:	-117dBm
AGC Threshold:	22 μ V (wideband 2MHz w/ max RF gain -45dBm total)
100 kHz Blocking Range:	77dB (useful range, top-bottom = 77dB)
Reciprocal Mixing Dyn. Range:	76dB
Narrow spacing dyn. range IMD3:	66dB
@ 50MHz	
Narrow spacing dyn. range IMD3:	73dB
@ 144MHz	
Narrow spacing dyn. range IMD3:	63dB

New MK3 SDR

It offers now a better connection via micro-USB cable into a PC Mac or a Android Smartphone and Tablets

The SDR as 2 micro-USB A and B.

USB-A is data and must be the one connected to device.

USB-B is Power assistance connections. (Charging while operating)

Due the short life of batteries of Smartphones and tables, and the power consumption of SDR, you can at same time use the SDR and charge the

tablet just by connecting you charger on USB-B



Toggle switch will select the SMA antenna input.
The LED light color will indicate.

BLUE= VHF and UP
ORANGE= Short Wave

Cables antennas and PC

Cable OTG Male-Male to use in any Tablet/Smartphone



Software installation:

Download from here: www.sdrsharp.com

Extract the Zip files into a folder and run httpget

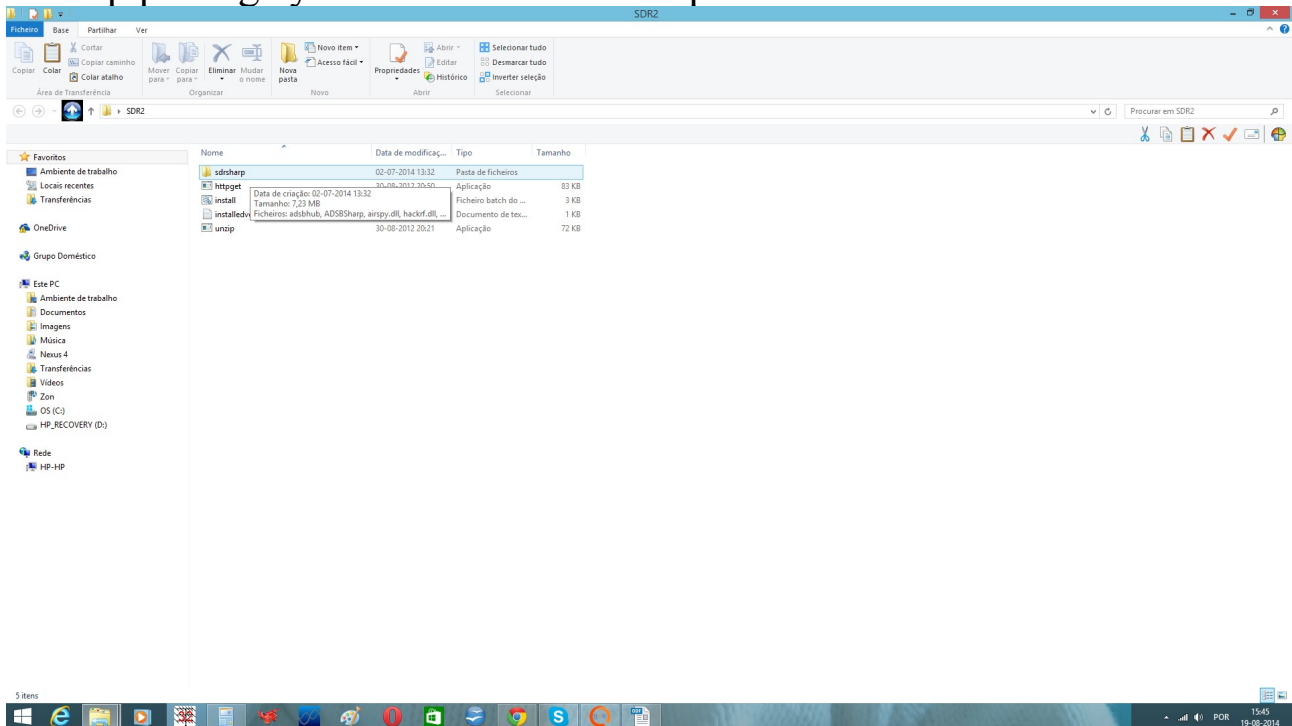
You will see a “black box” opening and several programs will install automatic.

Here all Available software list: <http://www.rtl-sdr.com/big-list-rtl-sdr-supported-software/>

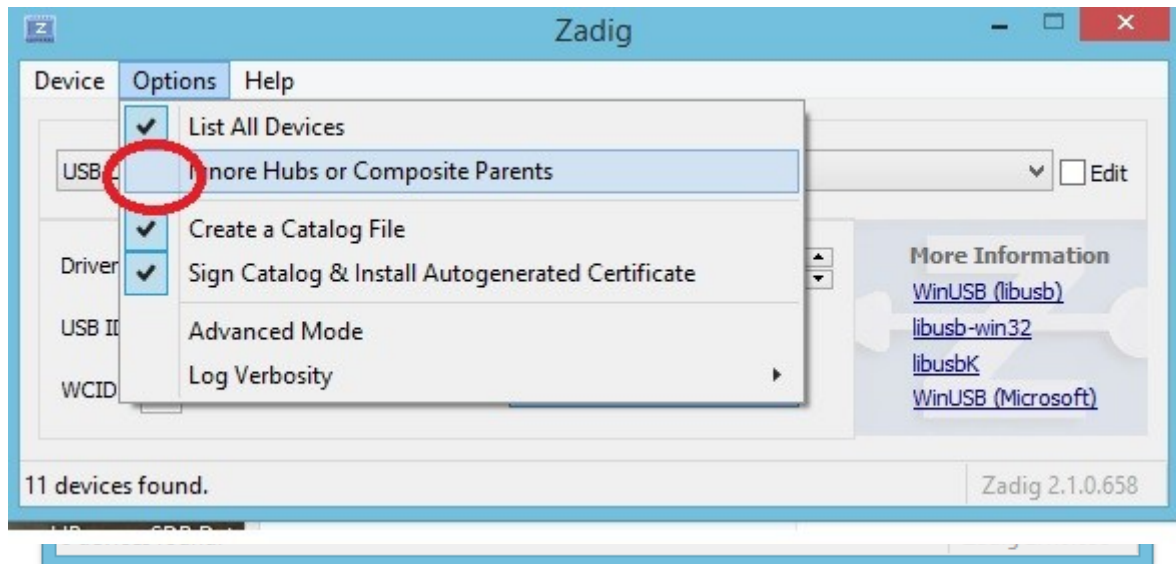
Plug you SDR on a USB connector,
You will ear a sound on PC speaker indicating that windows have found the device.

Windows will try to install is drivers. You don't need do anything

On Zip package you now downloaded open the ZADIG file and RUN it.



If you can't find on list a RTL2832UHIDIR or RTL2832U
Do as on this picture:

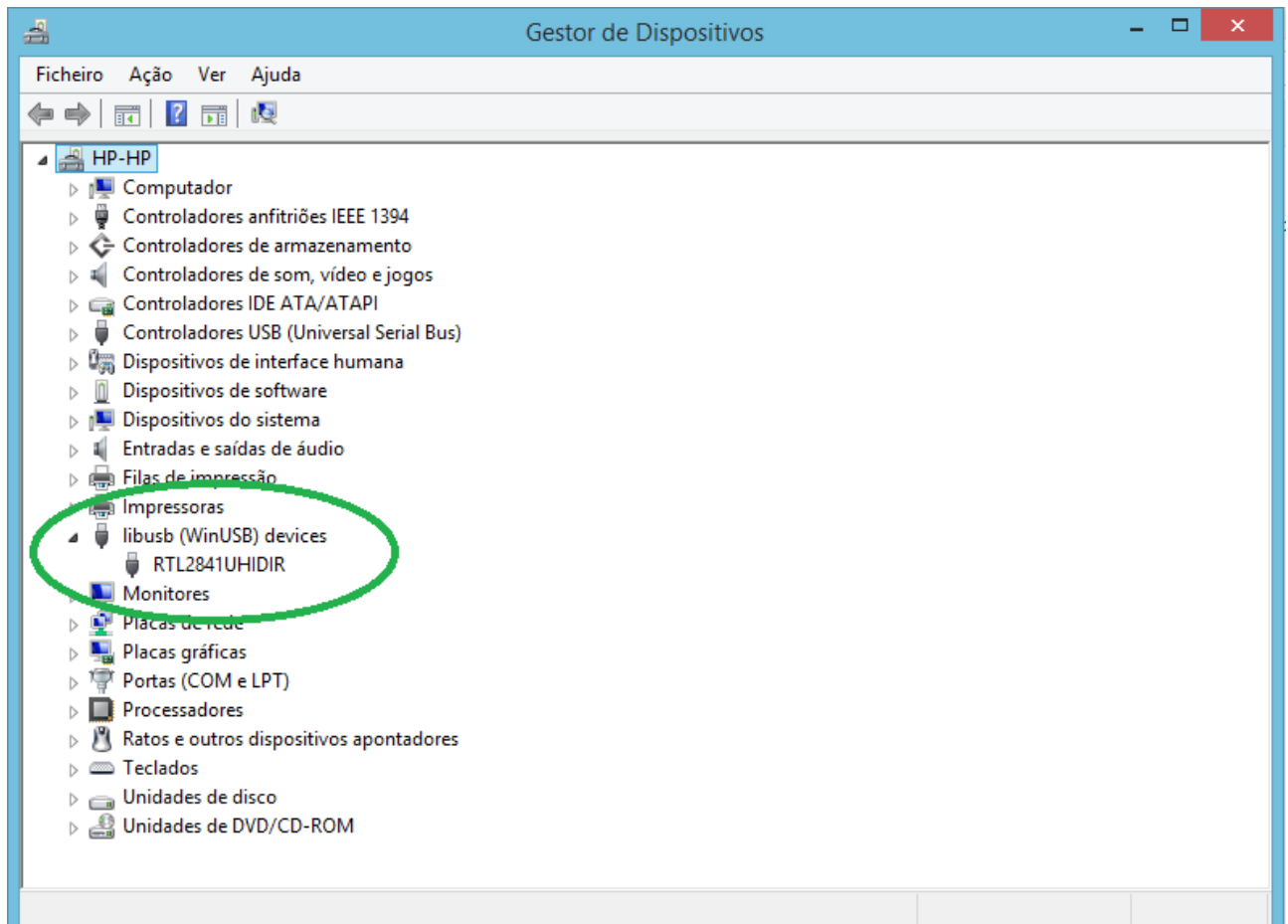


Open Options and uncheck “ Ignore Hubs or Composite Parents”

The RTL2832UHID will then show on list.

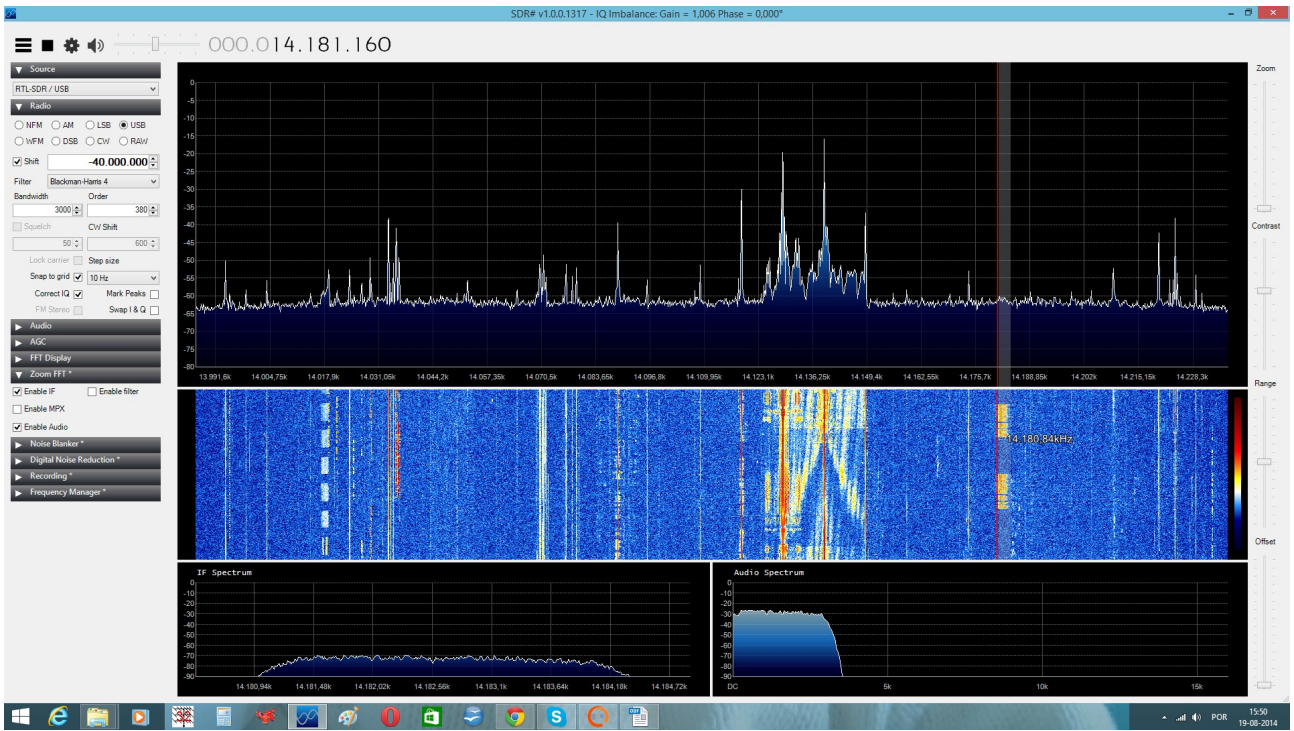
On options select LIST all devices and choose RTL2832UHIDIR
Install Drivers wait a few seconds.

When all drivers are OK, you can check on you Device Manager
Must be as picture.

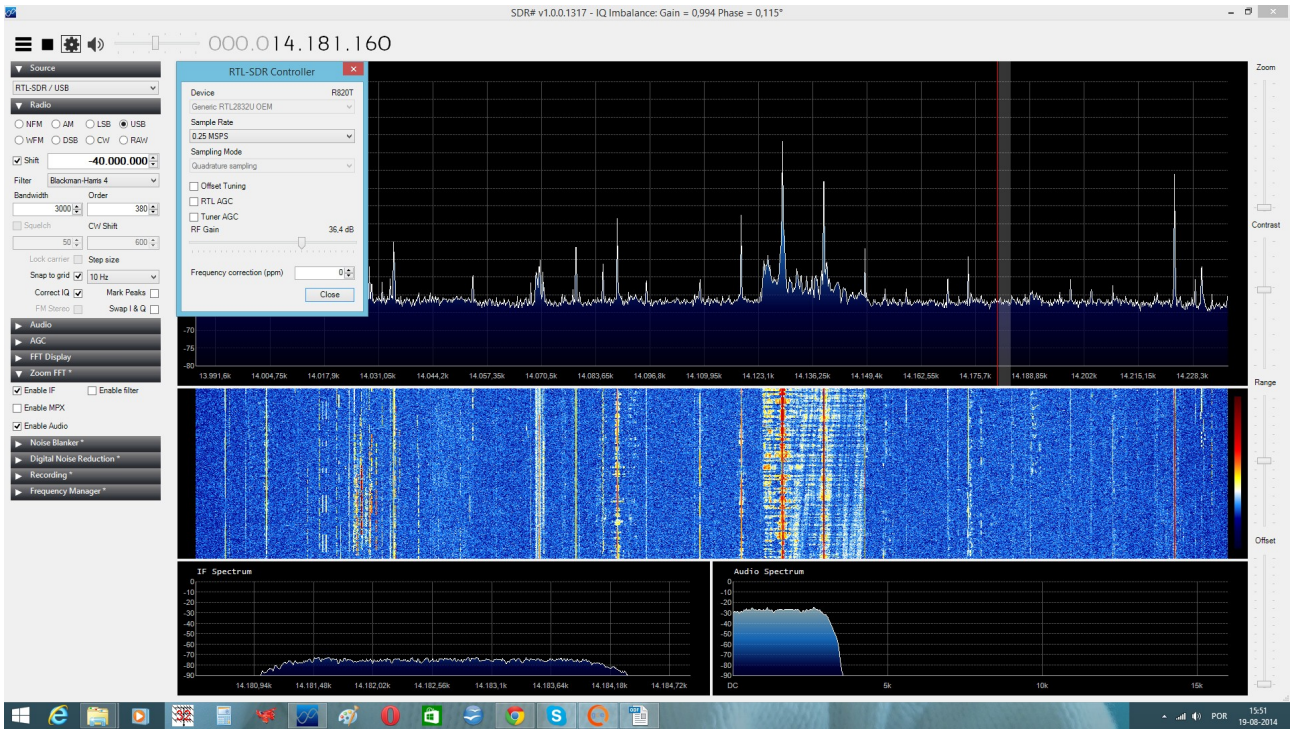


After drivers installed

open you SDR SHARP program



Select the Sample Rate and insert the Shift frequency as picture.



Run your SDR.

Operation on HF.

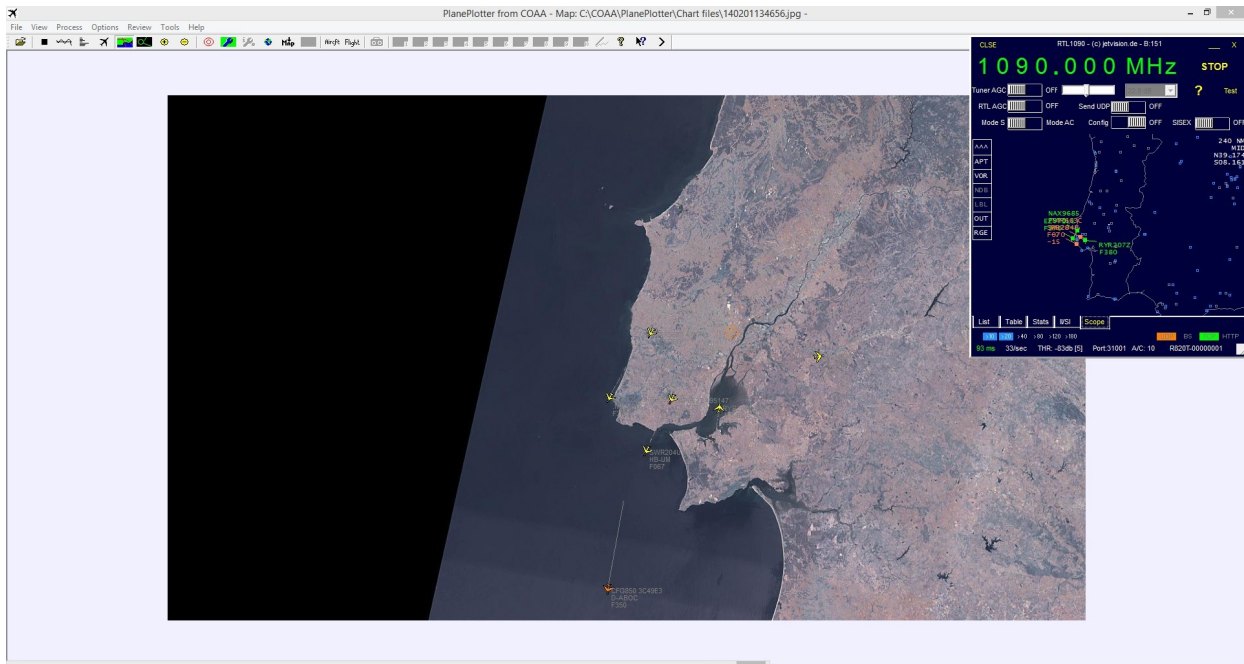
- Click in ON Shift box (ad -40 000 000)
- Switch on SDR toggle switch, Red LED will light
- Tune your SDR Sharp on the bands.
- Reception on this mode from 100KHz to 30MHz
- Input antenna is HF

Operation on VHF and UP:

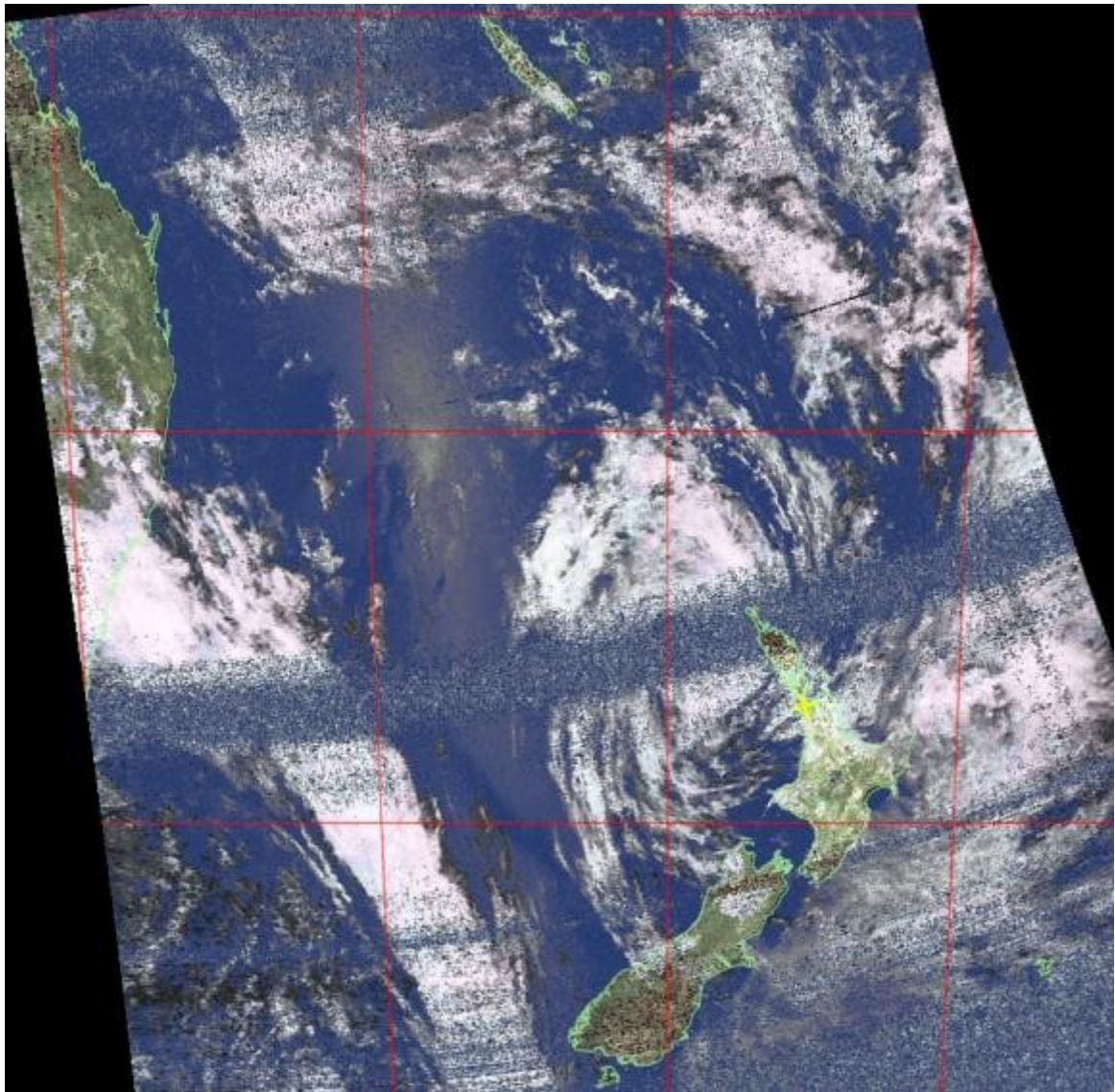
- Click OFF the Shift box
- Switch off the SDR toggle switch. Blue LED ON
- Tune SDR on the band you wish to receive
- Reception from 30MHz to 2GHz
- Input antenna is VHF

Plain Viewer RTL1090

GET software here: <http://rtl1090.web99.de/>



NOAA Weather satellites RX : <http://www.rtl-sdr.com/rtl-sdr-tutorial-receiving-noaa-weather-satellite-images/>



There are also many other freeware software's available on internet that you can try.

Gnu radio Linux software:
<http://rtlsdr.org/softwarelinux>



Android: https://play.google.com/store/apps/details?id=marto.rtl_tcp_andro&hl=pt_PT





SDR running on android SDR-Touch

other windows programs:

<http://www.hdsdr.de/>

<http://sdr-radio.com/>

etc.

Enjoy the new World of the radio on a SDR device.

Best 73

Tony

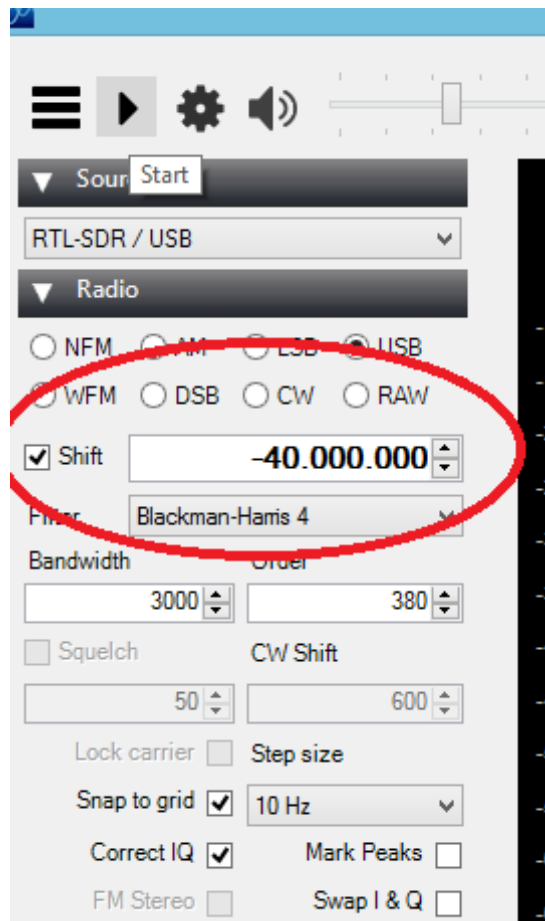
CT1FFU

www.dxpatrol.com ct1ffu@gmail.com +351965626669

Troubleshooting:

1- VHF works fine but no HF

- >make sure you enter the correct SHIFT frequency (minus) -40 000 000
- > make sure the switch is toggle to HF and LED is RED.
- > antenna input is HF



2 – Computer detects unknown device

- > reinstall the Zadig drivers with SDR plugged in.
- > try another USB cable (some cables just won't work)

3- Installed drivers but SDRsharp can't find any SDR.

> Sometimes, especially on Win7 the system install other windows drivers.

You need go on device manager and manually choose the drivers.
Fallow picture.

