

YAESU

YCE16
PC PROGRAMMING SOFTWARE
REFERENCE MANUAL

This software is used to program the FTA-250L air band transceiver.
With this software, you can quickly and easily program the FTA-250L operating channels from your personal computer.

CONTENTS

Before Using	3	Main Menu	13
Trademark Information	3	“File”	13
Installation and Removal of the Program	3	“Edit”	15
To install the YCE16	3	“Transfer”	15
To remove the YCE16 from your computer	3	“Region”	16
Startup of the Program.....	4	“Option”	16
To close the YCE16.....	4	“Help”	16
Connecting FTA-250L to your Computer and			
Entering CP Mode.....	4		
Main Screen	5		
“Setup” Category	5		
“Configuration”	5		
“COMM Setup”	7		
“Memory Book” Category	10		
Adding a New Entry.....	10		
Editing a Memory Book Entry	10		
Deleting a Memory Book Entry	11		
“Weather Channels” Category	12		

Important Notice: You assume full responsibility for the use of the YCE16.

The company and product names in this manual are trademarks and/or registered trademarks of their respective companies.

Before Using

Minimum System Requirements

- ☐ Windows® PC
- ☐ Windows 7®, Windows 8® or Windows 10® operating system
- ☐ Up to 20 Megabytes of free hard disk drive space
- ☐ Mouse or other pointing device
- ☐ 256-color display adapter (24-bit color recommended) and monitor with 640 * 480 resolution or higher
- ☐ NET Framework 3.5 or 4.0

This reference manual was created using the **Windows 7** operating system. Operations and screen examples may vary based on your operating system.

Trademark Information

Microsoft®, Windows®, Windows® 7, Windows® 8, and Windows® 10 are registered trademarks of Microsoft Corporation in the United States and other countries.

Installation and Removal of the Program

To install the YCE16

1. Download the **YCE16** PC Programming Software from the YAESU website and decompress the files to anywhere on your computer. Note that all the files must remain in the same folder.
2. Run the “YCE16_Vxxx_setup.exe” in the same folder that you have decompressed the files.
3. Follow the instructions on your computer screen.
If the YCE16 is successfully installed, a shortcut icon “YCE16” will appear on the desktop of your computer. The instruction screen for installing the FTA-250L device driver will also appear.
4. Follow the instructions on your computer screen.
The device driver will be installed.

To remove the YCE16 from your computer

1. Click the Start button and then “**Control Panel**”.
2. Click “**Programs**” and then “**Uninstall Programs**”.
3. Right-click “**YCE16**” and then click the menu item “**Uninstall**”.

Startup of the Program

Double-click the “YCE16” icon on the desktop of your computer, or click “YCE16” in the Start menu displayed by clicking the Start button.

To close the YCE16

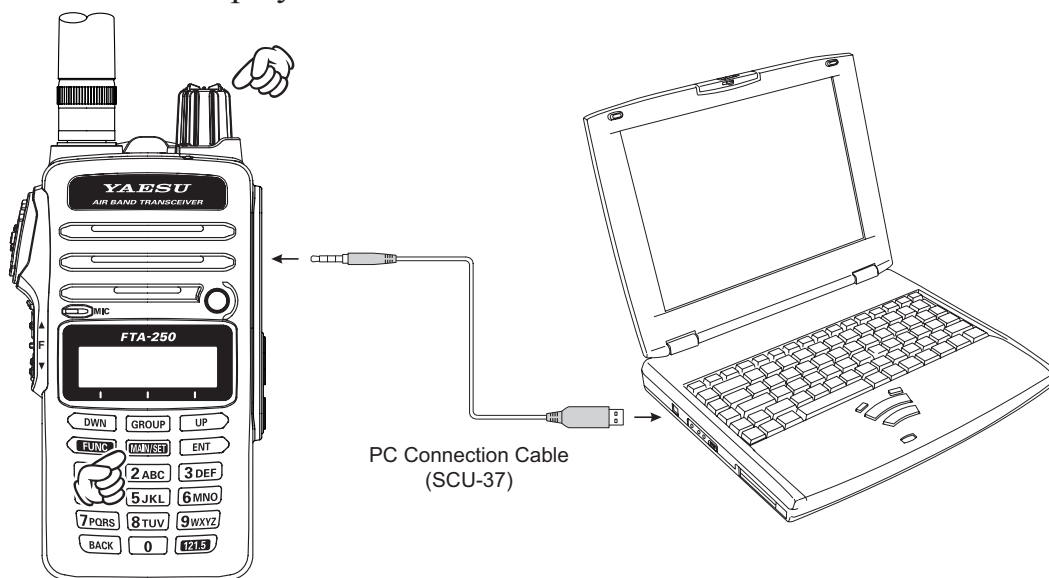
Click the [X] button in the top right corner of the YCE16 window, or click “Exit” in the “File” menu of the YCE16.

Connecting FTA-250L to your Computer and Entering CP Mode

You can use YCE16 by connecting FTA-250L to your computer and entering CP mode.

1. Turn the transceiver off.
2. Connect the computer to the transceivers **MIC/SP** jack using the optional PC Programming Cable “**SCU-37**”, as shown below.
3. Press and hold the [MAIN/SET] key while turning the transceiver on, to enter the programming mode.

The transceiver will display “**CP MODE**” on the LCD.

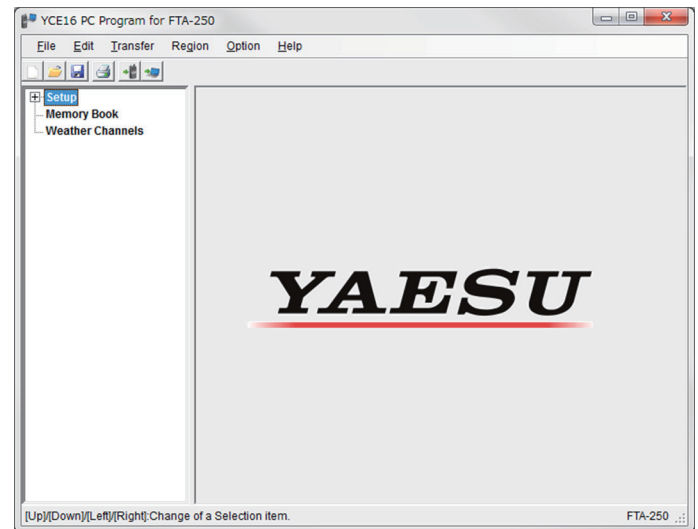


4. Start YCE16 and click “Option”.
5. Place the mouse cursor over “Port”, then select “Prolific USB-to-Serial Comm Port (COMx)” from the menu.
6. Click “Transfer”, then select “Read from Radio”.
The “Read from Radio” screen will appear.
7. Click the [Start] button. On the LCD of FTA-250L, “**PC Connected**” will appear. Once reading is successfully completed, a message will appear on the computer screen.
8. Click the [Ok] button. In the left panel of YCE16, the setting menu will appear.

Main Screen

The YCE16 main screen consists of two major sections: the **System Tree View** (left pane) and the list of detailed settings or entries of each category (right pane).

The **System Tree View** includes three categories: “**Setup**”, “**Memory Book**”, and “**Weather Channels**”.

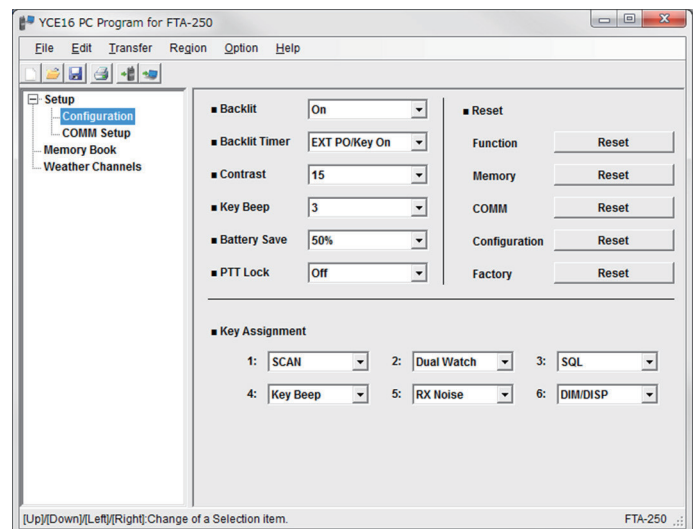


“Setup” Category

Double-click the “**Setup**” category to display the setup list (“**Configuration**”, and “**COMM Setup**”), then click the desired item to display its contents.

“Configuration”

This item includes the parameters set in the CONFIGURATION menu of the SETUP mode on the FTA-250L transceiver.



Backlit:

This parameter selects the Display and key button lighting. Available values are “**On**” (brightest), and “**Off**”.

Backlit Timer:

This parameter sets the backlight operation of the LCD display and keypad.

Available selections are:

Off: Sets the backlight for the LCD and keypad to OFF.

Continue: Sets the backlight for the LCD and keypad to continuously ON.

5sec / 10sec / 30sec / 60sec / 120sec / 300sec:

Sets the backlight for the LCD and keypad to illuminate for the selected time when any key is pressed.

EXP PO/Key On: Sets the backlight for the LCD and keypad to illuminate for 5 seconds when any key is pressed, or to illuminate continuously when connected to an external DC power source.

Main Screen

Contrast:

This parameter selects the sharpness of the LCD display from “**1**” to “**30**” levels.

Key Beep:

This parameter selects the loudness of the beeps heard when a key is pressed. Available values are “**1**” to “**5**” (loudest) and “**Off**”.

Battery Save:

This parameter sets the operation of the battery saver.

Available selections are:

Off: Sets the battery saver to OFF.

50%: Sets the battery saver to allow reception for 100 ms after 100 ms of no operation.

70%: Sets the battery saver to allow reception for 100 ms after 250 ms of no operation.

80%: Sets the battery saver to allow reception for 100 ms after 450 ms of no operation.

90%: Sets the battery saver to allow reception for 100 ms after 900 ms of no operation.

PTT Lock:

This parameter toggles the PTT lock feature “**On**” or “**Off**”.

Reset:

Settings or data can be cleared by category. When “**Factory**” is selected, all the settings and data will be reset to factory default.

Click the [**Reset**] button of the desired category to initialize settings or to erase data.

○ If you start a reset before connecting a radio to your computer, settings you have entered on the **YCE16** will be cleared.

○ If you start a reset after connecting a radio to your computer, the radio’s settings and data will be cleared.

Note: See Page 4 for details about the connection between the radio and your computer.

Main Screen

“COMM Setup”

This item includes the parameters mainly set in the COMM SETUP menu of the SETUP mode on the FTA-250L transceiver.

Usable Frequency Band:

These parameters determine which of the possible channel groups shall be “Used (☒)” or “Not Used (☐)” for the radio.

COMM Band: Enables or disables the reception and transmission on the COM band (118.000 through 136.975 MHz).

COMM Band (8.33 kHz):

Enables or disables the adjustment of the operation frequency by 8.33 kHz step on the COM band.

Weather CH Band: Enables or disables the reception of the ten weather channels.

Weather CH Band (Weather Alert): Toggles the reception of the weather alert signals “On” or “Off” when the “Weather CH Band” parameter is set to “Used (☒)”.

Emergency Call:

This parameter toggles the quick access feature to the emergency frequency (121.500 MHz) with the [121.5] key of the radio “On” or “Off”.

Auto Noise Limiter (ANL):

This parameter toggles the automatic noise reduction feature “On” or “Off”.

Priority Frequency [MHz]:

This parameter sets a channel to be used during the dual watch operation.

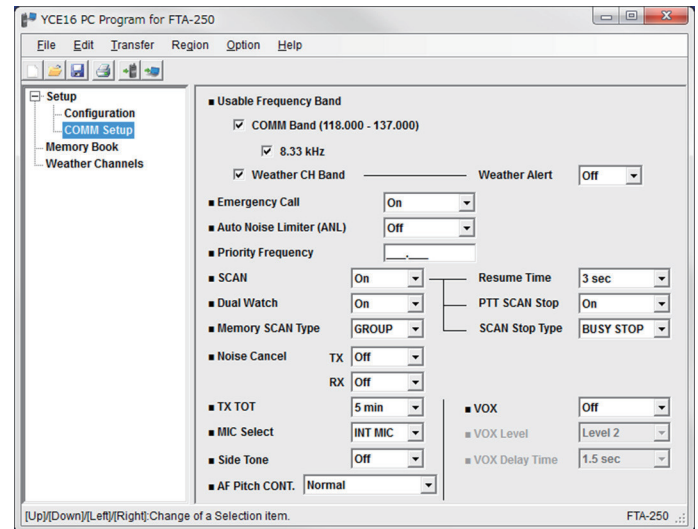
SCAN:

This parameter toggles the scan feature “On” or “Off.”

SCAN (Resume Time):

This parameter selects the scan resume time. Available values are “1 sec”, “2 sec”, “3 sec”, “4 sec”, and “5 sec”.

When this parameter is set to “1 sec”, “2 sec”, “3 sec”, “4 sec”, or “5 sec”, the scan-



Main Screen

ner will hold for the selected period (seconds), then resume whether or not the other station is still transmitting.

SCAN (PTT SCAN STOP):

This parameter defines whether the scan function shall be aborted (“**On**”) or not aborted (“**Off**”) when the PTT switch is pressed while scanning is engaged.

SCAN (SCAN Stop Type):

This parameter selects the resume scanning condition after the scan is temporally stopped by a received signal.

Available selections are:

BUSY STOP: Resume scanning only after the received signal disappears.

5 sec: Resume scanning after hold-ing on the received signal for 5 seconds.

10sec: Resume scanning after hold-ing on the received signal for 10 seconds.

Dual Watch:

This parameter toggles the dual watch feature “**On**” or “**Off**”.

Memory SCAN Type:

This parameter toggles the memory scanning operation between “**Group**” and “**ALL**”.

Group: Scan only the channels in the current memory group.

ALL: Scan memory channels of all the groups.

Noise Cancel:

This parameter selects the Noise-canceling function of the transmitter and receiver independently.

TX TOT:

This parameter selects the time-out time of the transmission. Available values are “**1 min**”, “**2 min**”, “**3 min**”, “**4 min**”, and “**5 min**”.

When this parameter is set to “**1 min**”, “**2 min**”, “**3 min**”, “**4 min**”, or “**5 min**”, the radio will shut off the transmission after it continues for the selected period (minutes).

MIC Select:

This parameter toggles the operation of the internal microphone “**INT MIC**” or “**EXT MIC**”.

When this parameter is set to “**EXT MIC**”, the radio’s PTT switch controls the external microphone on a headset, etc.

Main Screen

Side Tone:

This parameter selects the side tone level when an external headset is connected to the radio. Available values are “**Level 1**”, “**Level 2**”, “**Level 3**”, “**MAX**”, and “**Off**”.

AF Pitch CONT.:

This parameter selects the operation of the audio filter.

Available selections are:

Normal: Sets the audio filter to OFF.

LOW CUT: Sets the audio filter to cut off the lower range of sound.

HIGH CUT: Sets the audio filter to cut off the higher range of sound.

HIGH AND LOW CUT: Sets the audio filter to cut off the higher and lower range of sound.

VOX:

This parameter toggles the VOX feature “**On**” or “**Off**” when an external headset is connected to the radio.

VOX LEVEL:

This parameter is inactive until the parameter **VOX** is set to “**On**”.

This parameter selects the sensitivity of the VOX system. Available values are “**MIN**”, “**Level 1**”, “**Level 2**”, “**Level 3**”, and “**MAX**”.

VOX Delay Time:

This parameter is inactive until the parameter **VOX** is set to “**On**”.

This parameter selects the delay time of the VOX system. Available values are “**0.5 sec**”, “**1.0 sec**”, “**1.5 sec**”, “**2.0 sec**”, and “**3.0 sec**”.

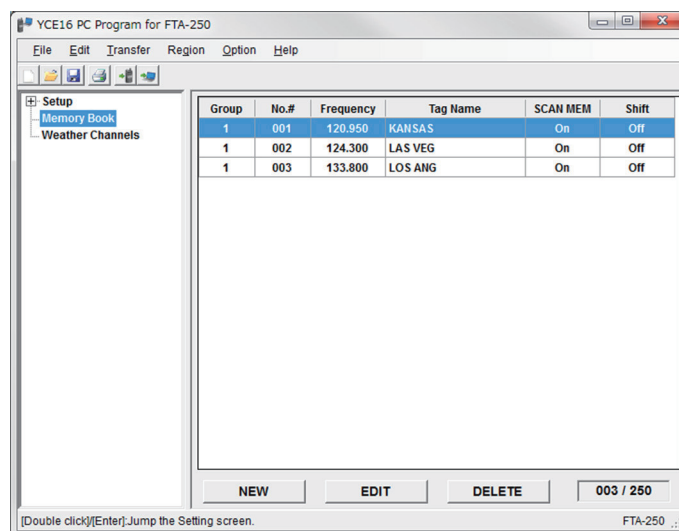
Main Screen

“Memory Book” Category

Double-click the “**Memory Book**” category to display the list of items (entries of channel or destination), then click the desired item to display its detailed information.

Adding a New Entry

1. Click the “**Memory Book**” category to display the list of entries on the right pane.
2. Click the [**NEW**] button at the bottom of the screen.
3. Set the desired items, referring to the descriptions in the next section.
4. Click the [**SAVE**] or [**CANCEL**] button at the bottom of the screen.



Editing a Memory Book Entry

You may also display the detailed information of an entry by selecting it from the list in the right pane then clicking the [**EDIT**] button at the bottom of the screen.

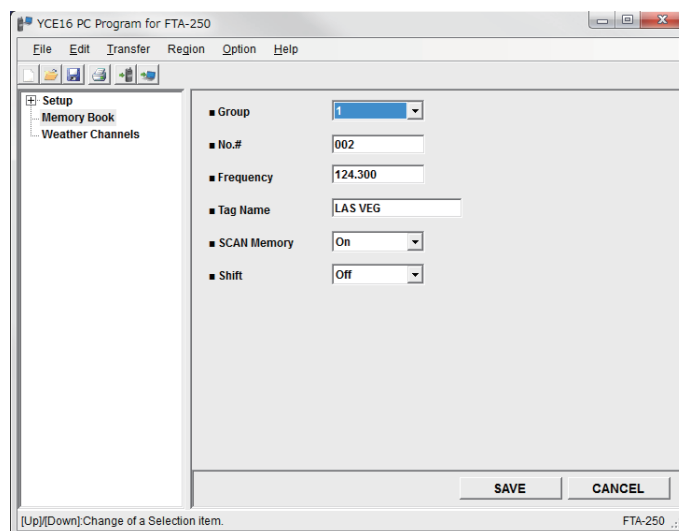
After you set the desired items, click the [**SAVE**] button at the bottom of the screen. To cancel Editing a Memory Book, click the [**CANCEL**] button.

Group:

Group of memory channels you have set the groups “1” to “9” when storing.

No.#:

Select the operating memory channel number.



Main Screen

Frequency [MHz]:

This parameter sets the channel frequency of the entry.

The FTA-250L is set up with default channel steps of 25 kHz. If you need to change the channel step increments, set the **8.33 kHz** check box to “ON (☒)” under the **Usable Frequency Band** item in the “**COMM Setup**” category.

Notes:

- Converted values according to the table on the right must be input when using frequencies by 8.33 kHz step.
- Frequencies by 8.33 kHz step are available only on the COM band (118.000 through 136.975 MHz).

Operating Frequency (8.33 kHz Step)	Input Value [MHz]
1**.0000 MHz	1**.005
1**.0083 MHz	1**.010
1**.0166 MHz	1**.015
1**.0250 MHz	1**.030
1**.0333 MHz	1**.035
1**.0416 MHz	1**.040
1**.0500 MHz	1**.055
1**.0583 MHz	1**.060
1**.0666 MHz	1**.065
1**.0750 MHz	1**.080
1**.0833 MHz	1**.085
1**.0916 MHz	1**.090

Tag Name:

This parameter allows you to assign an alphanumeric name to the entry for easy identification and search.

Up to 7 characters are available.

Available characters are 0 to 9, A to Z, plus (+), hyphen (-), slash (/), period (.), and space.

Note: This parameter cannot be left blank.

SCAN Memory:

This parameter sets memory scan of the entry to “**On**” or “**Off**”.

Shift:

This parameter toggles the moving of a spurious response “**On**” or “**Off**” if the frequency of the entry is affected by the CPU clock of the radio.

Note: This parameter is programmable only on the YCE16.

Deleting a Memory Book Entry

1. Click the “**Memory Book**” category to display the list of entries on the right pane.
2. Select the desired entry on the list.
3. Click the [**DELETE**] button at the bottom of the screen.
4. Click the [**Yes**] button on the dialog box appearing on the display.

Main Screen

“Weather Channels” Category

Click the “**Weather Channels**” category to display the preprogrammed weather channels, then click the desired channel to display and edit its information.

CH:

This parameter indicates the provided memory number of the channel.

Frequency:

This parameter indicates the frequency of the channel.

Tag Name:

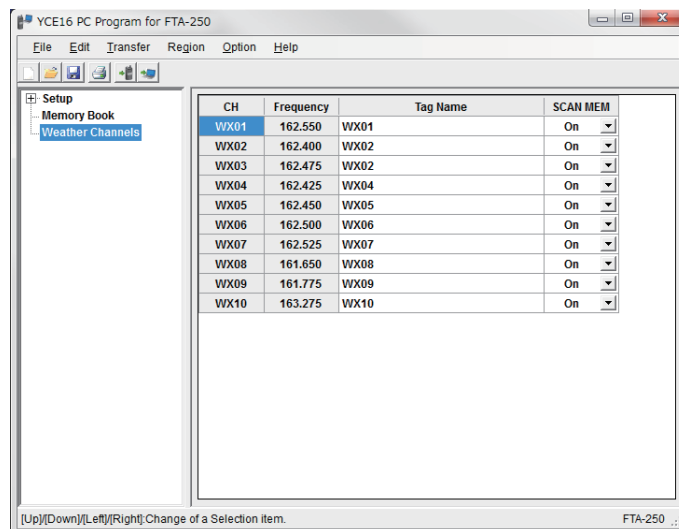
This parameter allows you to assign an alphanumeric name to the channel for easy identification and search.

Up to 7 characters are available.

Available characters are 0 to 9, A to Z, plus (+), hyphen (-), slash (/), period (.), and space.

SCAN MEM:

This parameter sets memory scan of the channel to “**On**” or “**Off**”.



Main Menu

The YCE16 has six menu categories, which are displayed on the menu bar of the YCE16 window. This section describes the items unique to the YCE16 under each menu.

“File”

This menu performs the opening, saving, and printing of files with an extension “.dat”, which include the settings and channel memory of the radio.

“New”

This selection opens a new file.

Click the left mouse button on the “New” parameter in the “File” menu, open the default configuration of the YCE16.

“Open”

This selection opens a previously-saved configuration from the computer.

Click the left mouse button on the “Open” parameter in the “File” menu, a pop-up window appears which shows you all the current files saved in the specified path. Double click the left mouse button on the desired file to open its file.

“Save”

This selection saves the programming file to the computer with the same name and directory.

Click the left mouse button on the “Save” parameter in the “File” menu, a caution message appears. If you are agreed to over-written the current file, click the left mouse button on the “OK” box.

“Save As...”

This selection saves the programming session to the computer with a new name.

Click the left mouse button on the “Save As” parameter in the File menu, a pop-up window appears which shows you all the current files saved to the specified path. To save the programming session with the new name, type a filename in the bottom box, then click the left mouse button on the “OK” box.

“Print”

This selection prints a programming configuration to hard copy.

Click the left mouse button on the “Print” parameter in the “File” menu, the “Printer” window open to enable printing.

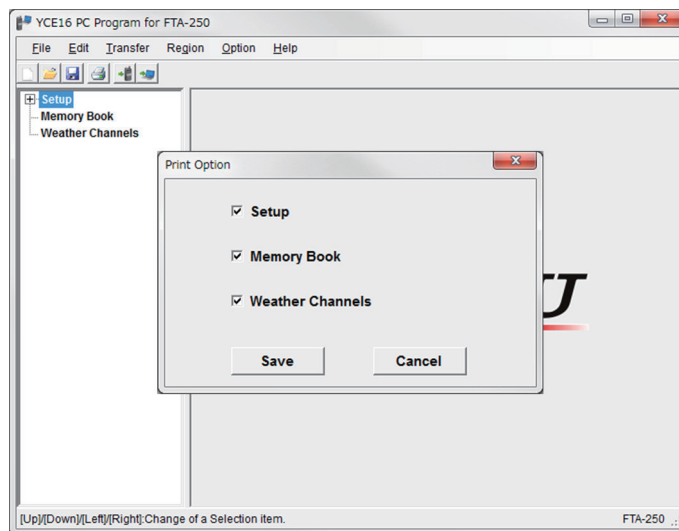
Main Menu

“Print” ► “Print Option”

This sub-item allows you to select the categories in the “**System Tree View**” whose data are to be output for printing or saving as plain text.

Only the files selected in the Print Option dialog box “ON (☒)” will be output.

After you change the setting of the check boxes, click the [**Save**] button of the dialog box.



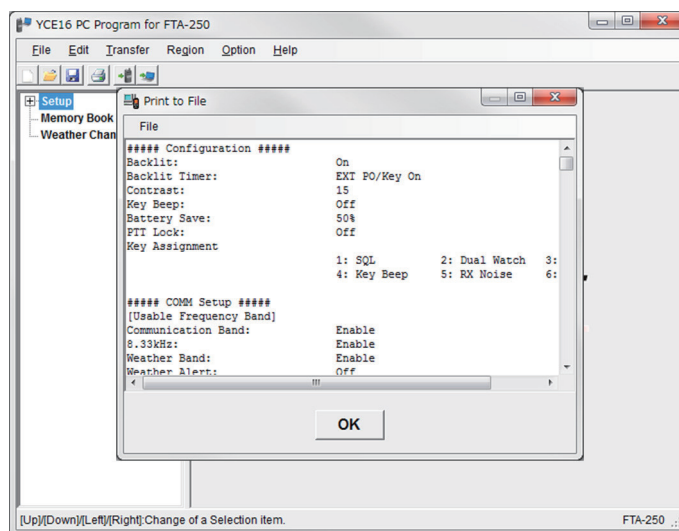
“Print to File”

This item allows you to save the settings you are opening and editing, in plain text.

A window showing the settings in the format to be saved will appear on the display.

To save it, click the “**File**” menu at the top left of the window, and select “**Save As...**”.

To cancel the saving, click the [**OK**] button at the bottom of the window.



“Exit”

This selection quits the program and close the window.

If the present configuration has not been saved to the computer, you will be asked to confirm whether you want to save it

Main Menu

“Edit”

“Model”


This item cannot be changed.

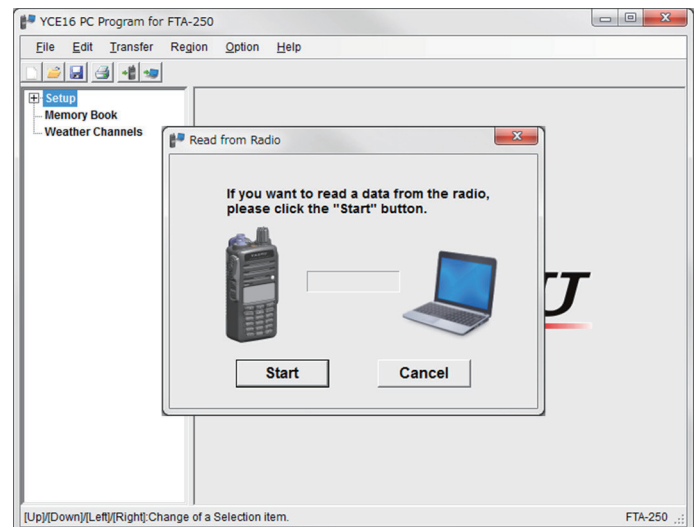
“Transfer”

This menu performs the downloading or uploading of information to/from a radio. To download/upload data to/from your radio, make a proper connection between the computer and your radio (see the next page) and turn on the radio before selecting the “**Transfer**” menu.

“Read from Radio”


The “**Read from Radio**” item uploads the stored data from the radio to the computer.

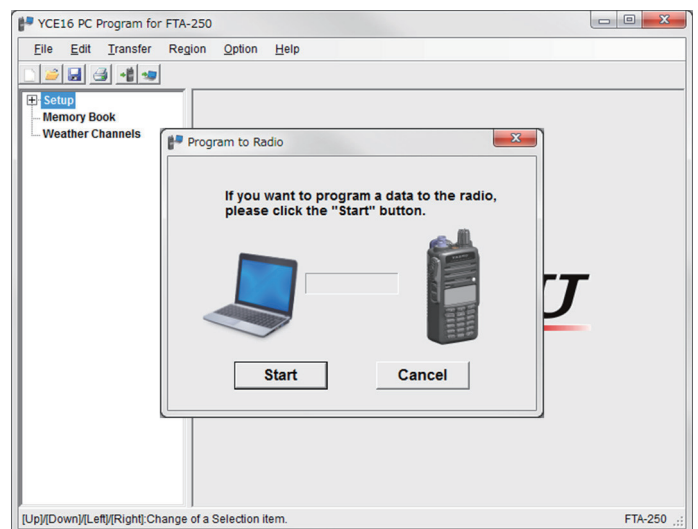
Select the “**Read from Radio**” (or click the  button) to open the pop-up window, then click the [Start] button to start uploading.



“Program to Radio”

The “**Program to Radio**” item downloads the data from the computer to the radio.

Select the “**Program to Radio**” (or click the  button) to open the pop-up window, then click the [Start] button to start downloading.



Main Menu

“Region”

This item cannot be changed.

“Option”

This menu allows you to set up the program according to your computer’s configuration.

“Port”

This item selects the communication port used to connect the FTA-250L.

If you connect multiple transceivers or other USB devices to your computer, all the active ports will be listed here. Select an appropriate port before resetting a transceiver, or programming or reading the settings in a transceiver.

“Help”

Click “Help”, then select “About Version” to display the version information.



Copyright 2017
YAESU MUSEN CO., LTD.
All rights reserved.

No portion of this manual may be
reproduced without the permission of
YAESU MUSEN CO., LTD.

YAESU MUSEN CO., LTD.

Tennozu Parkside Building
2-5-8 Higashi-Shinagawa, Shinagawa-ku, Tokyo 140-0002 Japan

YAESU USA

6125 Phyllis Drive, Cypress, CA 90630, U.S.A.

YAESU UK

Unit 12, Sun Valley Business Park, Winnall Close
Winchester, Hampshire, SO23 0LB, U.K.